

Appliances for collecting product samples

Drewmax company also has on offer appliances for collecting product samples. Depending on the type of the collected product, our company can select a properly designed machine.

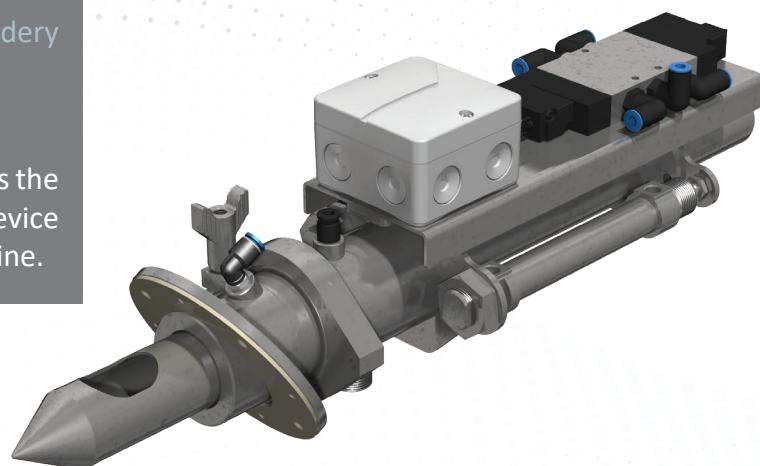
Our appliances are used for collecting, among others, products such as: loose animal feed, granulated animal feed, animal feed pre-mixes, powdered milk, milk substitute products, etc.

The presented appliances may have various capacities depending on the Customer's needs. The appliance installation can be performed on tanks, chain conveyors, grain feed tubes, etc.

PR-03 pipe sampler – It is used mainly for powdery products.

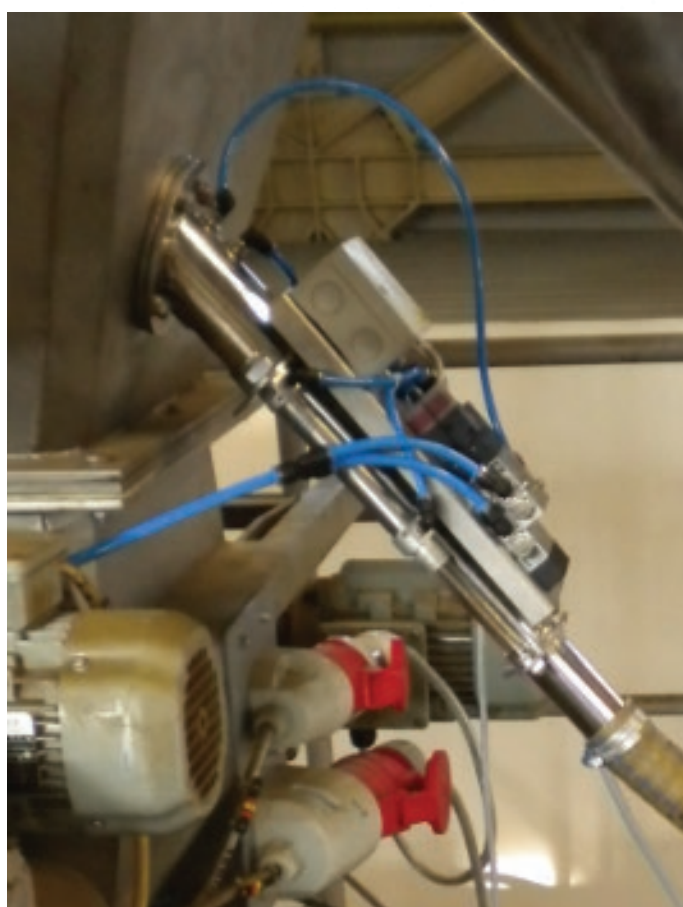
It is adapted to be installed in tanks.

Simple installation and optional control system allows the presented appliance to work as an independent device and be connected to any place in the technological line.



There is an option of both manual and automatic operation.

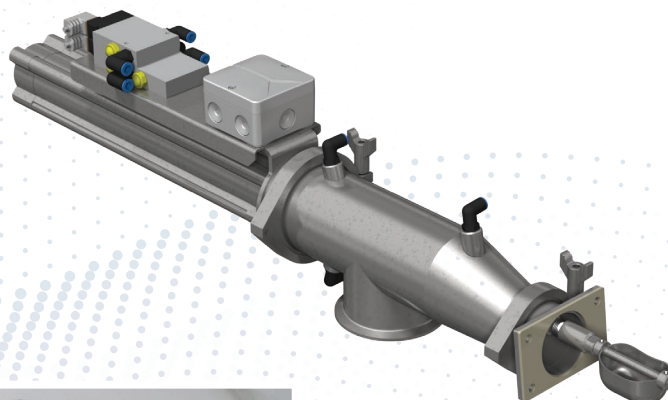
A special blow-through system increases the cleanness of the entire unit.



PK-02 bucket sampler – It is used mainly for granulated products.

It is adapted to be installed in not filled technological lines.

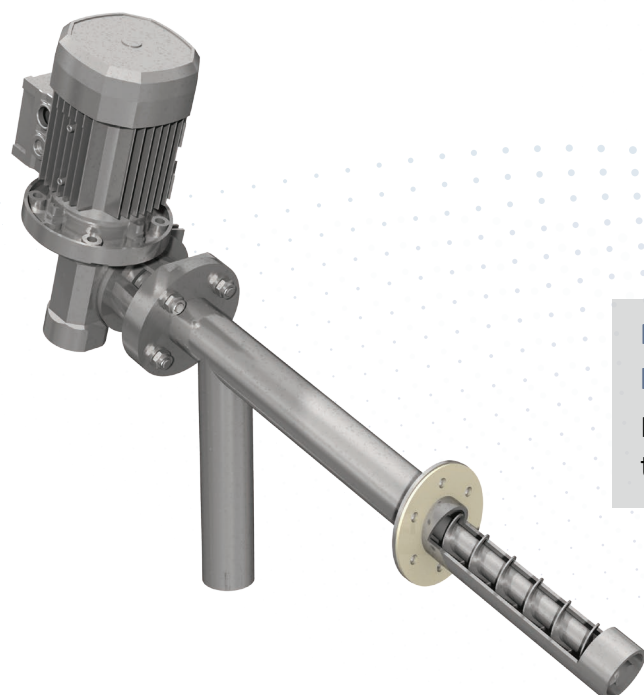
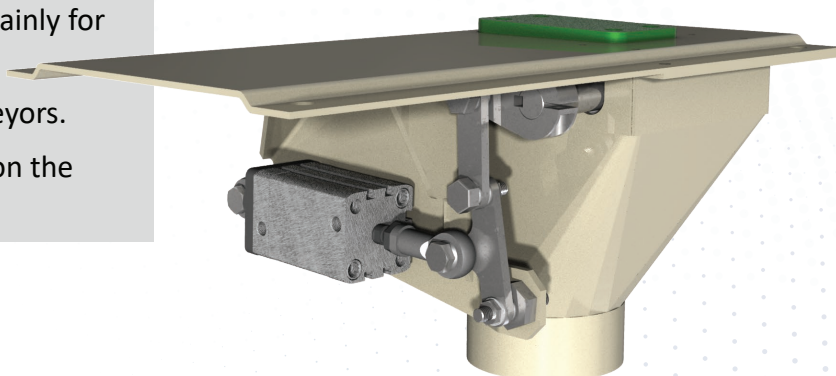
There is an option of both manual and automatic operation.



PPR-01 chain conveyor sampler – It is used mainly for granulated products.

It is adapted to be installed under chain conveyors.

A sampler is individually selected depending on the size of a conveyor.



PS-01 screw sampler – It is used mainly for collecting powdered milk samples.

PS-01 sampler installation is carried out on technological tanks.