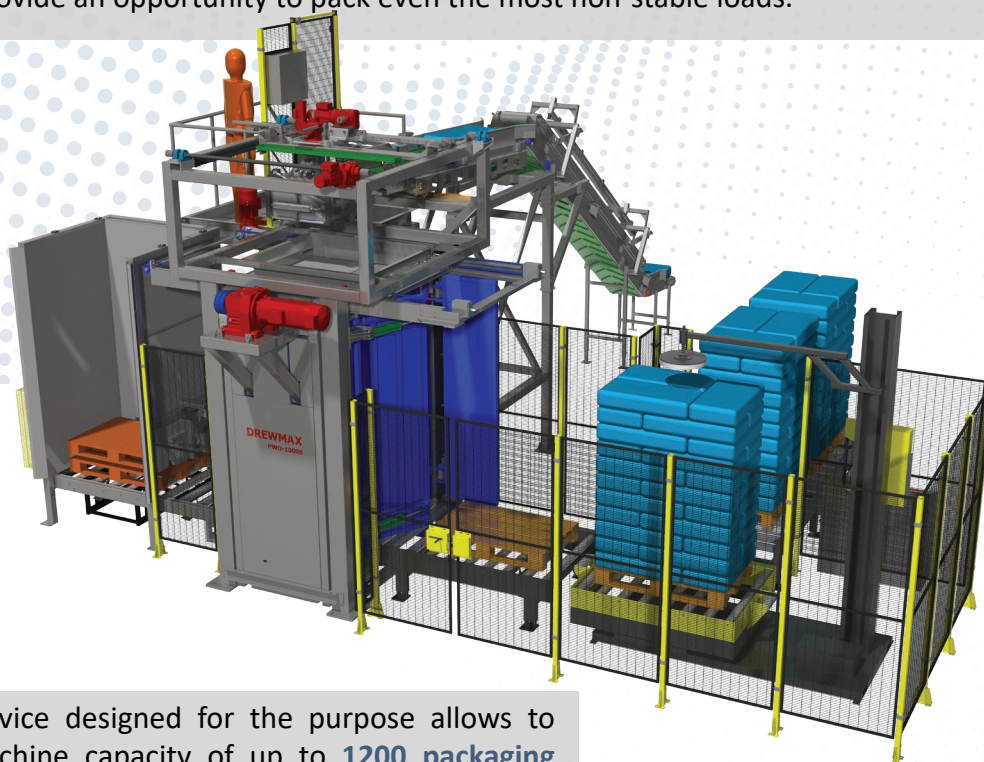
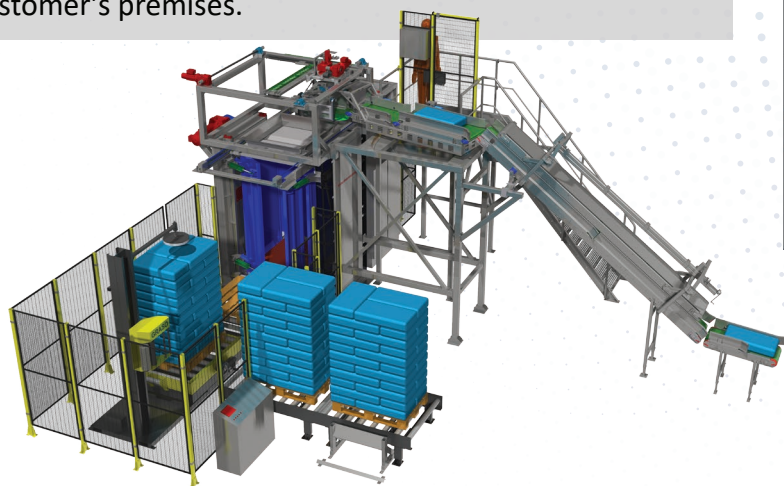


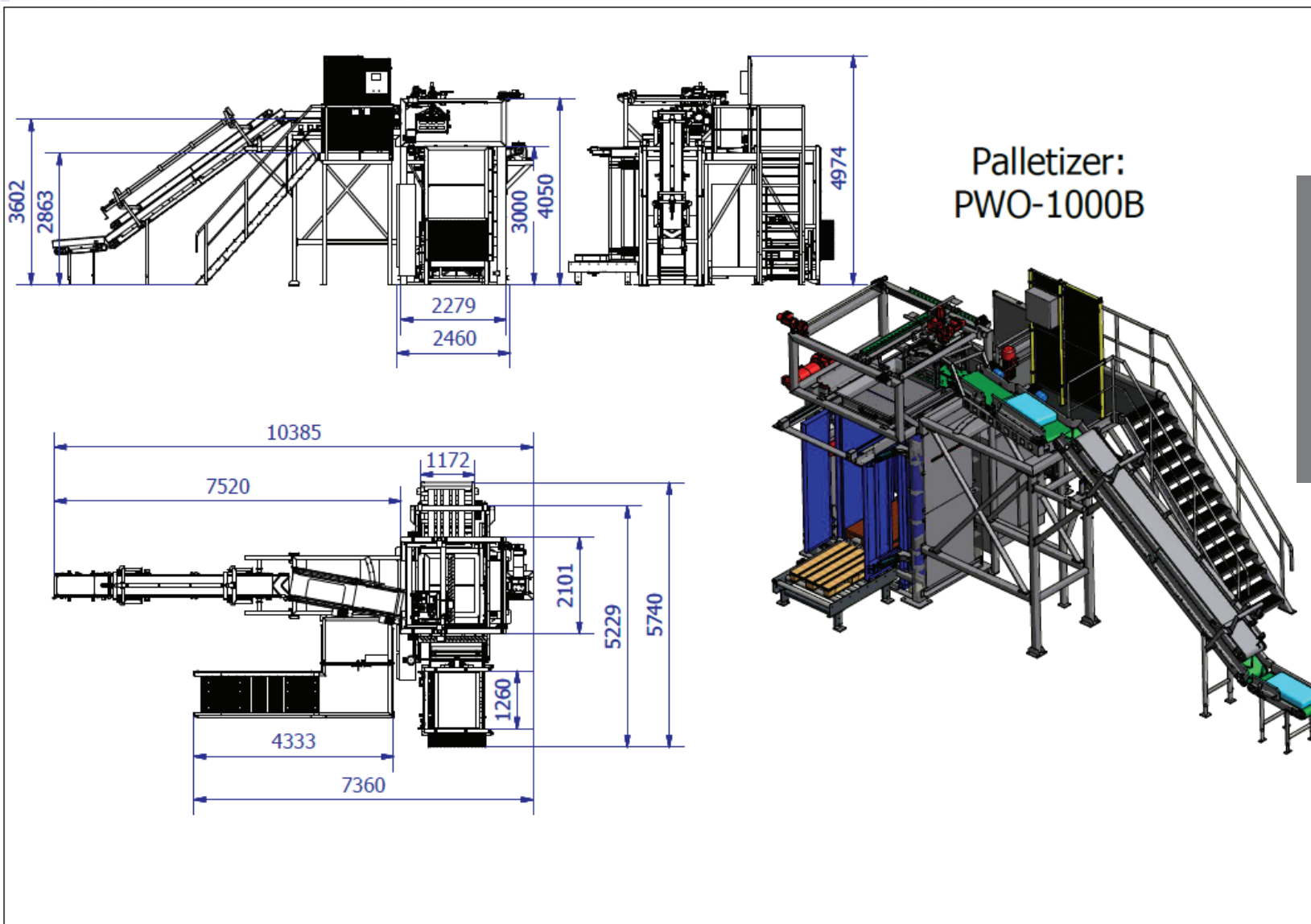
Palletizing – PWO-1000B Bag Palletizer

Palletizing containers with the use of PWO-1000B palletizer is optimally adapted to work with raschel bags mainly. Due to its structure, our palletizer model PWO-1000B is also suitable for other products. The applied sideboards provide an opportunity to pack even the most non-stable loads.



A gripping device designed for the purpose allows to reach the machine capacity of up to **1200 packaging products per hour**. Dependent upon actual needs, the palletizer can be additionally equipped with a feeder of empty pallets and an accessory storage for spacers (cardboard or foil). Our scope of activity encompasses counselling, design, performance and service on the Customer's premises.





Basic technical parameters:

- Number of pallets in the accessory storage – 16 pcs.
- Lift capacity – 1200kg
- Maximum bag weight – 30kg
- Capacity: 1200 bags/hour
- Arbitrary number of pre-set manners of laying bags
- Installed power: 27kW
- Supply voltage: 3x400V; 50Hz
- Air supply: 6-10bar
- Air consumption: about 200NI/min

